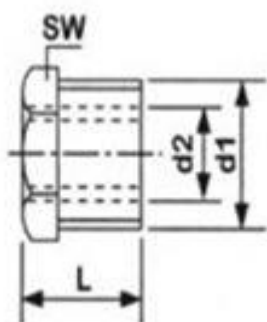


## REDUKCJA Z NAKRĘTKĄ 6-KĄTNA



d2-d1	L	d2-d1	L
1/4"-1/8"	21mm	1 1/4"-1"	47mm
3/8"-1/8"	24mm	1 1/2"-3/4"	54mm
3/8"-1/4"	24mm	1 1/2"-1"	54mm
1/2"-1/8"	26mm	1 1/2"-1 1/4"	54mm
1/2"-1/4"	26mm	2"-1"	63mm
1/2"-3/8"	32mm	2"-1 1/4"	63mm
3/4"-1/4"	32mm	2"-1 1/2"	63mm
3/4"-1/8"	37mm	2 1/2"-1 1/4"	87mm
3/4"-1/2"	37mm	2 1/2"-1 1/2"	87mm
1"-3/8"	37mm	2 1/2"-2"	87mm
1"-1/2"	37mm	3"-1 1/2"	95mm
1"-3/4"	47mm	3"-2"	95mm
1 1/4"-3/4"	47mm	3"-2 1/2"	95mm